



13 MAR 1998

**January 1998
New Motor Vehicle
Registrations
Australia**

Product No. 9303.0.40.003

© Commonwealth of Australia 1998

STATISTICS IN AUSTRALIA

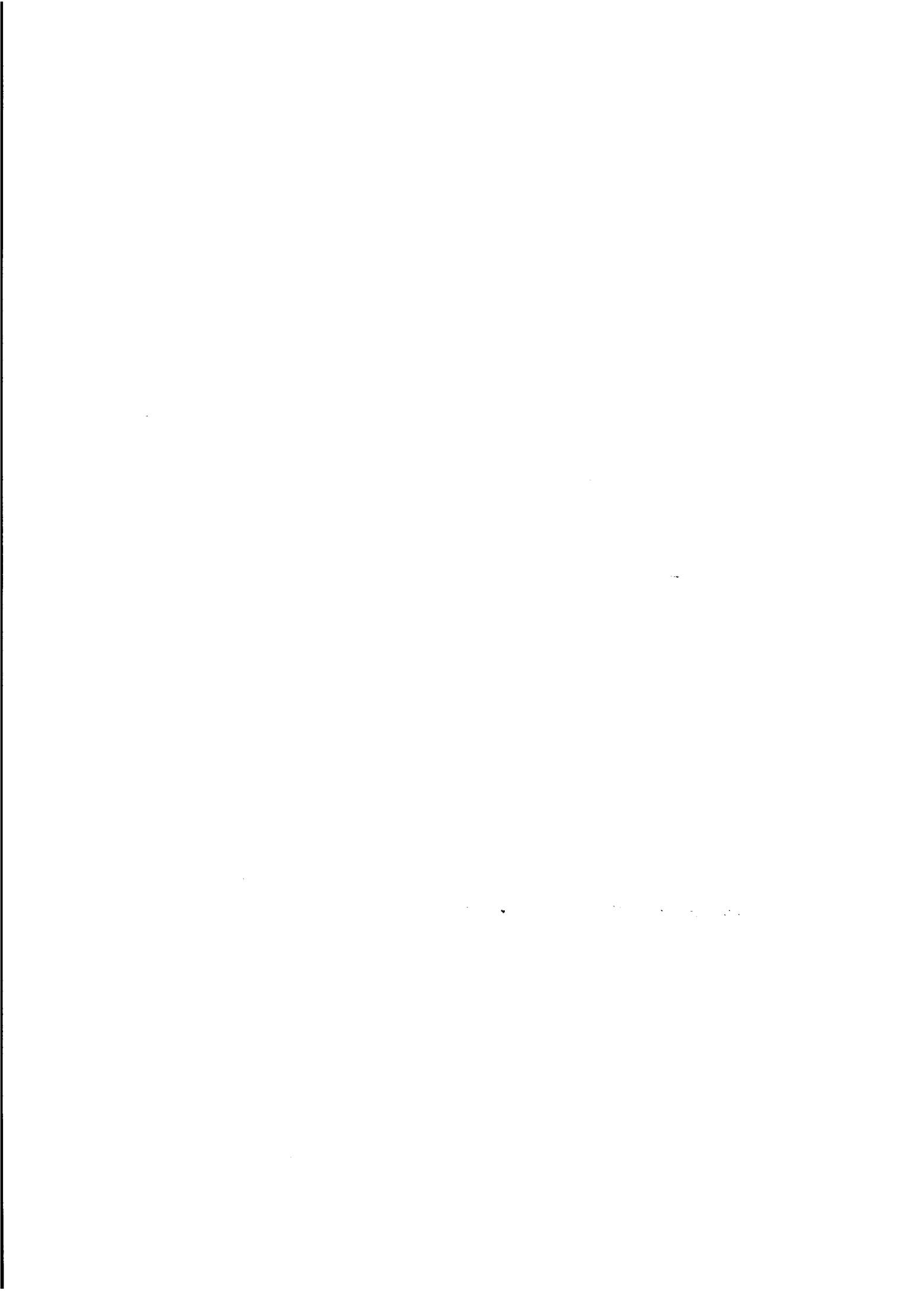
Produced by the Australian Bureau of Statistics

CONTENTS

Table	Page
1. New motor vehicles by type of vehicle, original, seasonally adjusted and trend estimate: Australia, latest 15 months	1
2. New motor vehicles by type of vehicle: Australia, latest 15 months and previous three years	1
3. New motor vehicles, original, seasonally adjusted and trend estimate: State/Territory, latest 15 months	2
4. New motor vehicles by type of vehicle: State/Territory and capital cities, January 1998	3
5. New plant and equipment, caravans and trailers: State/Territory and capital cities, January 1998	3
6. New motor vehicles by type of vehicle: State/Territory and capital cities, Seven months ended January 1997, 1998	3
7. New passenger vehicles by make of vehicle: Australia, January, November and December 1997 and January 1998	4
8. New light commercial vehicles, trucks and buses by make of vehicle: November and December 1997 and January 1998	5
9. New passenger vehicles by make of vehicle: State/Territory and capital cities, January 1998	6
10. New passenger vehicles by selected make and model of vehicle: Australia, January 1998	7
11. New light commercial vehicles by make of vehicle: State/Territory and capital cities, January 1998	8
12. New light commercial vehicles by tare weight and make of vehicle: Australia, January 1998	8
13. New rigid trucks by make of vehicle: State/Territory and capital cities, January 1998	8
14. New rigid trucks by gross vehicle mass and make of vehicle: Australia, January 1998	9
15. New articulated trucks by make of vehicle: State/Territory and capital cities, January 1998	9
16. New articulated trucks by gross combination mass and make of vehicle: Australia, January 1998	9
17. New non-freight carrying trucks by make of vehicle: State/Territory and capital cities, January 1998	10
18. New buses by make of vehicle: State/Territory and capital cities, January 1998	10
19. New buses by tare weight and make of vehicle: Australia, January 1998	10
20. New motor cycles by make of vehicle: State/Territory and capital cities, January 1998	11
21. New motor vehicles by fuel type and type of vehicle: Australia, January 1998	11

INQUIRIES

- *for further information about statistics in this data service and the availability of related unpublished statistics, contact Robin Walden phone (07) 3222 6180.*
 - *for information about other ABS statistics and services please refer to the back page of this data service.*
-



**TABLE 1. NEW MOTOR VEHICLES BY TYPE OF VEHICLE,
ORIGINAL, SEASONALLY ADJUSTED AND TREND ESTIMATE, AUSTRALIA**

Period	Passenger vehicles			Other vehicles(a)			Total(a)		
	Original	Seasonally adjusted	Trend estimate	Original	Seasonally adjusted	Trend estimate	Original	Seasonally adjusted	Trend estimate
<i>1996-97 —</i>									
November	45,253	45,627	45,353	8,355	8,503	8,682	53,608	54,131	54,035
December	46,165	44,718	46,140	8,423	8,688	8,719	54,588	53,406	54,860
January	39,604	48,011	46,902	6,566	8,626	8,787	46,170	56,637	55,689
February	46,563	48,487	47,574	8,308	9,237	8,870	54,871	57,724	56,444
March	46,366	47,739	48,103	8,628	9,183	8,947	54,994	56,921	57,050
April	47,959	48,657	48,475	9,162	8,738	8,983	57,121	57,394	57,459
May	48,932	47,915	48,879	9,689	8,685	9,013	58,621	56,600	57,892
June	55,551	50,096	49,486	12,126	9,319	9,038	67,677	59,415	58,525
<i>1997-98 —</i>									
July	52,302	50,414	50,400	9,800	9,094	9,068	62,102	59,508	59,468
August	49,235	50,076	51,553	8,348	9,082	9,113	57,583	59,158	60,665
September	53,726	53,465	52,689	8,789	9,230	9,169	62,515	62,695	61,858
October	57,471	54,573	53,675	9,180	9,328	9,223	66,651	63,901	62,898
November	52,945	54,708	54,465	8,521	8,700	9,291	61,466	63,408	63,756
December	58,253	55,013	55,044	9,675	9,839	9,368	67,928	64,852	64,412
January	44,164	54,762	55,471	7,164	9,504	9,464	51,328	64,267	64,935

(a) Excludes motor cycles, plant and equipment, caravans and trailers.

TABLE 2. NEW MOTOR VEHICLES BY TYPE OF VEHICLE, AUSTRALIA

Period	Passenger vehicles	Light commercial vehicles	Trucks			Buses	Total (excludes motor cycles)	Motor cycles
			Rigid	Articulated	Non-freight carrying			
1994-95	528,501	88,840	11,392	4,814	866	4,495	638,908	20,505
1995-96	531,785	86,667	9,725	2,909	1,080	4,376	636,542	22,345
1996-97	557,962	88,204	9,470	3,145	1,099	3,972	663,852	22,842
<i>1996-97 —</i>								
November	45,253	6,814	833	275	95	338	53,608	2,369
December	46,165	6,893	851	255	128	296	54,588	2,002
January	39,604	5,506	515	157	55	333	46,170	1,881
February	46,563	7,069	674	186	58	321	54,871	1,926
March	46,366	7,227	772	241	94	294	54,994	1,913
April	47,959	7,567	886	298	58	353	57,121	1,868
May	48,932	8,067	897	276	96	353	58,621	2,111
June	55,551	10,474	914	302	68	368	67,677	1,745
<i>1997-98 —</i>								
July	52,302	8,091	978	355	88	288	62,102	1,914
August	49,235	6,672	935	306	131	304	57,583	2,021
September	53,726	7,172	881	308	140	288	62,515	2,101
October	57,471	7,311	952	425	151	341	66,651	2,850
November	52,945	6,927	891	328	120	255	61,466	2,452
December	58,253	7,926	1,019	351	103	276	67,928	2,549
January	44,164	6,068	563	197	42	294	51,328	2,181

TABLE 3. NEW MOTOR VEHICLES, ORIGINAL, SEASONALLY ADJUSTED AND TREND ESTIMATE

Period	NSW			Vic.			Qld		
	Original	Seasonally adjusted	Trend estimate	Original	Seasonally adjusted	Trend estimate	Original	Seasonally adjusted	Trend estimate
1996-97 —									
November	18,455	18,288	18,481	13,399	13,737	13,377	9,823	10,422	10,318
December	17,793	17,773	18,781	13,737	13,508	13,714	10,544	10,172	10,354
January	16,047	19,895	19,113	10,975	13,708	13,978	8,552	10,648	10,394
February	18,926	19,820	19,452	13,958	14,407	14,099	9,823	10,739	10,467
March	19,390	19,598	19,734	13,559	14,707	14,106	10,619	10,538	10,581
April	19,916	19,831	19,897	14,167	13,926	14,081	10,521	10,348	10,702
May	20,717	19,694	19,992	14,508	13,977	14,118	10,546	10,362	10,870
June	24,181	20,706	20,094	14,948	13,556	14,297	13,961	11,910	11,082
1997-98 —									
July	20,470	20,141	20,276	15,483	14,622	14,637	12,345	11,372	11,310
August	18,647	19,709	20,555	15,249	15,390	15,091	10,749	11,039	11,529
September	21,330	21,165	20,860	15,552	15,757	15,538	11,712	11,991	11,699
October	21,813	21,650	21,169	17,462	16,108	15,862	11,998	11,775	11,830
November	21,056	21,507	21,458	15,252	15,996	16,060	11,265	11,873	11,953
December	21,879	21,335	21,699	17,038	16,179	16,183	13,153	12,333	12,052
January	17,342	22,083	21,932	12,273	15,915	16,198	9,884	12,002	12,174
		SA			WA			Tas.	
	Original	Seasonally adjusted	Trend estimate	Original	Seasonally adjusted	Trend estimate	Original	Seasonally adjusted	Trend estimate
1996-97 —									
November	3,515	3,454	3,454	5,677	5,526	5,741	1,267	1,228	1,205
December	3,582	3,584	3,553	5,903	5,756	5,766	1,737	1,168	1,190
January	2,942	3,694	3,660	5,397	5,848	5,802	935	1,248	1,178
February	3,827	3,881	3,749	5,961	6,138	5,859	898	1,084	1,181
March	3,627	3,713	3,801	5,224	5,548	5,925	958	1,184	1,197
April	3,716	3,936	3,813	5,886	6,178	5,987	1,047	1,265	1,219
May	3,640	3,637	3,810	6,164	5,961	6,058	1,211	1,260	1,247
June	4,439	3,951	3,815	6,728	6,203	6,149	1,128	1,200	1,267
1997-98 —									
July	3,896	3,766	3,848	6,489	6,379	6,271	1,476	1,381	1,274
August	3,876	3,848	3,919	5,937	6,128	6,399	1,314	1,237	1,271
September	4,174	4,064	4,017	6,297	6,500	6,509	1,503	1,265	1,264
October	4,335	4,110	4,126	7,489	6,935	6,596	1,387	1,268	1,263
November	4,199	4,167	4,230	6,533	6,563	6,659	1,108	1,144	1,266
December	4,483	4,537	4,318	6,977	6,726	6,694	2,153	1,400	1,273
January	3,366	4,300	4,401	5,863	6,570	6,710	925	1,268	1,275
		NT			ACT			Australia	
	Original	Seasonally adjusted	Trend estimate	Original	Seasonally adjusted	Trend estimate	Original	Seasonally adjusted	Trend estimate
1996-97 —									
November	610	593	591	862	883	868	53,608	54,131	54,035
December	501	607	615	791	838	887	54,588	53,406	54,860
January	519	672	647	803	924	917	46,170	56,637	55,689
February	551	652	679	927	1,003	958	54,871	57,724	56,444
March	704	665	701	913	967	1,007	54,994	56,921	57,050
April	852	829	705	1,016	1,081	1,054	57,121	57,394	57,459
May	773	660	696	1,062	1,049	1,100	58,621	56,600	57,892
June	873	674	677	1,419	1,216	1,143	67,677	59,415	58,525
1997-98 —									
July	664	635	657	1,279	1,211	1,194	62,102	59,508	59,468
August	589	619	646	1,222	1,187	1,256	57,583	59,158	60,665
September	632	677	652	1,315	1,276	1,319	62,515	62,695	61,858
October	712	668	673	1,455	1,387	1,380	66,651	63,901	62,898
November	619	650	699	1,434	1,507	1,430	61,466	63,408	63,756
December	644	762	725	1,601	1,581	1,467	67,928	64,852	64,412
January	574	787	753	1,101	1,342	1,492	51,328	64,267	64,935

TABLE 4. REGISTRATIONS OF NEW MOTOR VEHICLES BY TYPE OF VEHICLE, JANUARY 1998

Type of vehicle	NSW	Vic.	Qld	SA	WA	Tas.	NT	ACT	Australia	Capital cities
Passenger vehicles	15,256	10,854	8,106	2,883	4,860	752	422	1,031	44,164	31,840
Light commercial vehicles	1,764	1,183	1,551	414	845	153	100	58	6,068	3,123
Trucks —										
Rigid	191	111	134	31	72	10	14	—	563	338
Articulated	51	62	37	21	20	6	—	—	197	89
Non-freight carrying	8	10	8	5	11	—	—	—	42	20
Buses	72	53	48	12	55	4	38	12	294	143
Total (excl. motor cycles)	17,342	12,273	9,884	3,366	5,863	925	574	1,101	51,328	35,553
Capital cities	12,242	9,478	5,188	2,638	4,437	469	..	1,101	35,553	35,553
Other areas	5,100	2,795	4,696	728	1,426	456	574	..	15,775	..
Motor cycles	713	602	400	132	232	40	23	39	2,181	1,282

TABLE 5. REGISTRATIONS OF NEW PLANT AND EQUIPMENT, CARAVANS AND TRAILERS, JANUARY 1998

Type of vehicle	NSW	Vic.	Qld	SA	WA	Tas.	NT	ACT	Australia	Capital cities
Plant and equipment	59	89	107	41	86	15	—	1	398	157
Caravans(a)	70	96	74	21	68	10	—	—	339	166
Trailers	1,547	1,114	1,379	457	720	228	74	47	5,566	2,782
Total	1,676	1,299	1,560	519	874	253	74	48	6,303	3,105

(a) Excludes self-propelled caravans.

TABLE 6. REGISTRATIONS OF NEW MOTOR VEHICLES BY TYPE OF VEHICLE, SEVEN MONTHS ENDED JANUARY 1998

Type of vehicle	NSW	Vic.	Qld	SA	WA	Tas.	NT	ACT	Australia	Capital cities
Passenger vehicles	124,249	94,656	66,132	24,439	38,222	8,407	3,298	8,693	368,096	268,102
Light commercial vehicles	15,003	10,902	12,308	3,112	6,096	1,247	857	642	50,167	26,062
Trucks —										
Rigid	2,128	1,530	1,332	347	664	99	96	23	6,219	3,963
Articulated	576	681	484	255	196	59	14	5	2,270	1,063
Non-freight carrying	96	148	367	57	81	21	4	1	775	598
Buses	485	392	483	119	326	33	165	43	2,046	1,184
Total (excl. motor cycles)										
— 7 months ended January										
1998	142,537	108,309	81,106	28,329	45,585	9,866	4,434	9,407	429,573	300,972
1997	125,581	91,120	70,494	23,867	40,056	9,271	3,962	6,217	370,568	260,677
Capital cities	99,534	83,940	44,707	22,573	35,611	5,200	..	9,407	300,972	300,972
Other areas	43,003	24,369	36,399	5,756	9,974	4,666	4,434	..	128,601	..
Motor cycles										
— 7 months ended January										
1998	4,944	4,649	2,657	1,077	1,847	326	272	296	16,068	9,337
1997	3,822	3,607	2,463	972	1,610	298	274	233	13,279	7,669

TABLE 7. REGISTRATION OF NEW PASSENGER VEHICLES BY MAKE OF VEHICLE, AUSTRALIA

<i>Make</i>	<i>Nov. 1997</i>	<i>Dec. 1997</i>	<i>Jan. 1998</i>	<i>Jan. 1997</i>
Alfa Romeo	2	3	—	—
Asia	—	5	2	1
Aston Martin	—	—	2	—
Audi	229	181	188	175
Bentley	1	1	2	2
B.M.W.	618	736	801	797
Chevrolet	—	2	—	—
Chrysler	233	212	239	186
Citroen	32	22	18	18
Daewoo	1,985	1,808	1,756	706
Daihatsu	495	537	555	514
Eunos	51	53	47	65
Ferrari	1	8	8	7
Ford	8,626	9,459	6,322	6,517
G.M.C.	—	—	—	2
Holden	9,535	11,198	6,765	6,613
Honda	1,628	1,900	1,921	864
Hyundai	5,165	4,776	4,011	5,240
Isuzu	—	—	2	1
Jaguar	53	54	48	39
Jeep	478	468	383	584
Kia	538	847	368	344
Lada	15	12	7	22
Lamborghini	—	—	1	1
Land Rover	455	462	299	263
Lexus	125	104	132	87
Lotus	5	4	7	3
Maserati	2	—	1	1
Mazda	2,137	2,142	2,045	1,941
Mercedes-Benz	528	476	607	412
M.G.	54	57	51	—
Mitsubishi	5,972	6,483	4,995	4,774
Nissan	2,250	2,770	2,433	1,527
Peugeot	213	205	227	293
Porsche	32	25	91	65
Proton	317	339	272	124
Range Rover	62	55	41	32
Renault	—	—	—	8
Rolls Royce	1	1	—	—
Saab	227	310	257	212
Seat	16	11	5	42
Ssangyong	104	113	54	126
Subaru	1,446	1,670	1,498	890
Suzuki	596	895	641	733
Toyota	7,924	9,047	6,464	4,759
Volkswagen	450	351	299	372
Volvo	308	395	281	219
Unknown	36	56	18	23
Total	52,945	58,253	44,164	39,604

TABLE 8. REGISTRATIONS OF NEW LIGHT COMMERCIAL VEHICLES, TRUCKS, AND BUSES BY MAKE OF VEHICLE, AUSTRALIA

Make	Nov. 1997	Dec. 1997	Jan. 1998					Total
	Total	Total	Light commercial vehicles	Trucks			Buses	
				Rigid	Articulated	Non-freight carrying		
Asia	6	3	2	—	—	—	3	5
Chevrolet	1	11	1	—	—	—	—	1
Daewoo	12	32	30	—	—	—	—	30
Daihatsu	20	12	1	10	—	—	—	11
Ford	1,536	1,629	1,163	33	19	9	—	1,224
Freight Liner	61	67	—	12	26	—	—	38
G.M.C.	18	11	—	—	—	6	—	6
Hino	108	134	—	62	—	8	16	86
Holden	1,623	1,788	1,200	—	—	1	—	1,201
Hyundai	—	1	—	—	—	—	—	—
International	123	128	—	40	33	2	4	79
Isuzu	307	338	—	177	2	5	—	184
Kenworth	87	98	—	9	33	—	—	42
Kia	10	7	15	—	—	—	—	15
Land Rover	41	80	34	—	—	—	—	34
Leyland	—	1	—	1	—	—	1	2
Mack	52	70	—	15	27	—	—	42
Man	16	13	—	9	1	—	13	23
Mazda	401	401	337	24	—	5	—	366
MCA	—	1	—	—	—	—	—	—
Mercedes-Benz	20	38	2	1	—	—	37	40
Mitsubishi	927	1,266	739	94	6	1	1	841
Nissan	436	480	568	—	—	—	15	583
Nissan UD	61	71	—	27	4	—	—	31
Oka	1	—	—	—	—	—	—	—
Peterbilt	—	—	—	1	—	—	—	1
Scania	36	38	—	2	13	—	18	33
Suzuki	32	29	25	—	—	—	—	25
Tata	37	25	23	—	—	—	—	23
Toyota	2,278	2,603	1,812	29	—	2	171	2,014
Volkswagen	175	180	116	—	—	—	—	116
Volvo	64	98	—	13	18	2	7	40
Western Star	23	16	—	1	14	—	—	15
Unknown	9	6	—	3	1	1	8	13
Total	8,521	9,675	6,068	563	197	42	294	7,164

TABLE 9. REGISTRATIONS OF NEW PASSENGER VEHICLES BY MAKE OF VEHICLE,
JANUARY 1998

<i>Make</i>	<i>NSW</i>	<i>Vic.</i>	<i>Qld</i>	<i>SA</i>	<i>WA</i>	<i>Tas.</i>	<i>NT</i>	<i>ACT</i>	<i>Australia</i>	<i>Capital cities</i>
Asia	1	—	1	—	—	—	—	—	2	1
Aston Martin	1	1	—	—	—	—	—	—	2	2
Audi	101	56	8	8	9	—	2	4	188	177
Bentley	1	—	—	1	—	—	—	—	2	2
B.M.W.	289	276	109	34	61	5	1	26	801	678
Chrysler	86	52	39	4	47	1	5	5	239	185
Citroen	13	4	—	1	—	—	—	—	18	14
Daewoo	558	368	377	153	218	33	21	28	1,756	1,165
Daihatsu	261	66	81	45	74	16	4	8	555	375
Eunos	17	20	6	1	3	—	—	—	47	44
Ferrari	3	2	1	1	1	—	—	—	8	7
Ford	2,005	1,659	1,283	413	664	105	41	152	6,322	4,237
Holden	2,181	1,745	1,282	464	724	98	38	233	6,765	5,154
Honda	757	565	261	92	179	35	8	24	1,921	1,559
Hyundai	1,300	925	690	251	636	99	49	61	4,011	2,642
Isuzu	—	2	—	—	—	—	—	—	2	2
Jaguar	23	11	6	4	4	—	—	—	48	40
Jeep	126	90	78	26	48	3	11	1	383	285
Kia	92	78	90	29	53	16	3	7	368	197
Lada	—	—	2	—	4	1	—	—	7	4
Lamborghini	—	1	—	—	—	—	—	—	1	1
Land Rover	110	60	67	12	36	8	6	—	299	184
Lexus	67	24	28	8	3	—	—	2	132	116
Lotus	5	1	—	—	1	—	—	—	7	7
Maserati	—	—	—	—	1	—	—	—	1	1
Mazda	762	591	325	98	194	22	11	42	2,045	1,580
Mercedes-Benz	272	153	93	38	34	6	2	9	607	503
M.G.	22	14	6	5	4	—	—	—	51	44
Mitsubishi	1,668	1,138	873	497	461	85	57	216	4,995	3,859
Nissan	685	603	560	131	347	36	26	45	2,433	1,551
Peugeot	95	73	31	11	8	5	—	4	227	191
Porsche	29	38	10	5	8	1	—	—	91	84
Proton	115	40	67	17	17	6	7	3	272	163
Range Rover	14	13	8	2	4	—	—	—	41	34
Saab	125	73	23	10	16	2	1	7	257	227
Seat	3	2	—	—	—	—	—	—	5	4
Ssangyong	12	26	8	5	3	—	—	—	54	43
Subaru	614	322	264	76	153	34	8	27	1,498	975
Suzuki	288	108	87	39	90	11	9	9	641	413
Toyota	2,299	1,486	1,252	380	711	117	110	109	6,464	4,570
Volkswagen	161	78	26	13	11	4	2	4	299	265
Volvo	95	76	61	9	32	3	—	5	281	241
Unknown	—	14	3	—	1	—	—	—	18	14
Total	15,256	10,854	8,106	2,883	4,860	752	422	1,031	44,164	31,840

TABLE 10. REGISTRATIONS OF NEW PASSENGER VEHICLES BY SELECTED
MAKE AND MODEL OF VEHICLE,
JANUARY 1998

<i>Make/Model</i>	<i>NSW</i>	<i>Vic.</i>	<i>Qld</i>	<i>SA</i>	<i>WA</i>	<i>Tas.</i>	<i>NT</i>	<i>ACT</i>	<i>Australia</i>
Ford									
Falcon/Fairmont	1,014	885	625	171	380	47	19	102	3,243
Festiva	480	369	366	142	141	26	13	23	1,560
Laser	283	219	155	57	70	18	4	16	822
Other	228	186	137	43	73	14	5	11	697
Total	2,005	1,659	1,283	413	664	105	41	152	6,322
Holden									
Commodore/Calais	1,497	1,216	936	302	472	68	29	185	4,705
Barina	255	156	118	47	61	13	1	22	673
Statesman/Caprice	76	99	30	25	46	1	1	5	283
Other	353	274	198	90	145	16	7	21	1,104
Total	2,181	1,745	1,282	464	724	98	38	233	6,765
Hyundai									
Excel	945	696	491	191	438	71	32	50	2,914
Lantra	221	138	112	35	140	22	10	10	688
Sonata	90	51	51	16	41	5	4	1	259
Other	44	40	36	9	17	1	3	0	150
Total	1,300	925	690	251	636	99	49	61	4,011
Mazda									
323	356	305	178	54	99	10	5	20	1,027
121	192	128	76	22	59	6	6	9	498
626	177	139	63	22	33	6	0	10	450
Other	37	19	8	0	3	0	0	3	70
Total	762	591	325	98	194	22	11	42	2,045
Mitsubishi									
Magna	482	470	349	289	186	35	23	133	1,967
Lancer	433	344	264	94	155	16	15	40	1,361
Mirage	472	142	111	35	47	15	6	24	852
Other	281	182	149	79	73	19	13	19	815
Total	1,668	1,138	873	497	461	85	57	216	4,995
Nissan									
Pulsar	375	276	256	53	145	23	12	32	1,172
Patrol	175	186	201	57	142	7	9	8	785
Maxima	45	57	36	9	26	2	1	2	178
Other	90	84	67	12	34	4	4	3	298
Total	685	603	560	131	347	36	26	45	2,433
Toyota									
Corolla	593	358	230	88	132	23	23	51	1,498
Camry	355	254	162	44	98	19	18	13	963
Landcruiser	208	131	263	47	130	16	15	8	818
Other	1,143	743	597	201	351	59	54	37	3,185
Total	2,299	1,486	1,252	380	711	117	110	109	6,464

TABLE 17. REGISTRATIONS OF NEW NON-FREIGHT CARRYING TRUCKS BY MAKE OF VEHICLE, JANUARY 1998

<i>Make</i>	<i>NSW</i>	<i>Vic.</i>	<i>Qld</i>	<i>SA</i>	<i>WA</i>	<i>Tas.</i>	<i>NT</i>	<i>ACT</i>	<i>Australia</i>	<i>Capital cities</i>
Ford	1	1	3	3	1	—	—	—	9	8
G.M.C.	—	5	—	1	—	—	—	—	6	4
Hino	—	3	1	—	4	—	—	—	8	2
Holden	—	1	—	—	—	—	—	—	1	—
International	—	—	—	—	2	—	—	—	2	—
Isuzu	1	—	1	—	3	—	—	—	5	1
Mazda	4	—	1	—	—	—	—	—	5	4
Mitsubishi	1	—	—	—	—	—	—	—	1	—
Toyota	1	—	—	—	1	—	—	—	2	1
Volvo	—	—	2	—	—	—	—	—	2	—
Unknown	—	—	—	1	—	—	—	—	1	—
Total	8	10	8	5	11	—	—	—	42	20

TABLE 18. REGISTRATIONS OF NEW BUSES BY MAKE OF VEHICLE, JANUARY 1998

<i>Make</i>	<i>NSW</i>	<i>Vic.</i>	<i>Qld</i>	<i>SA</i>	<i>WA</i>	<i>Tas.</i>	<i>NT</i>	<i>ACT</i>	<i>Australia</i>	<i>Capital cities</i>
Asia	—	1	2	—	—	—	—	—	3	2
Hino	3	6	1	—	6	—	—	—	16	4
International	2	—	—	—	2	—	—	—	4	1
Leyland	1	—	—	—	—	—	—	—	1	—
Man	3	3	2	5	—	—	—	—	13	7
Mercedes-Benz	16	6	4	—	1	1	9	—	37	8
Mitsubishi	—	—	1	—	—	—	—	—	1	—
Nissan	4	1	6	—	2	—	2	—	15	3
Scania	12	4	1	—	—	—	—	1	18	11
Toyota	25	31	31	7	44	3	27	3	171	93
Volvo	6	1	—	—	—	—	—	—	7	6
Unknown	—	—	—	—	—	—	—	8	8	8
Total	72	53	48	12	55	4	38	12	294	143

TABLE 19. REGISTRATIONS OF NEW BUSES BY TARE WEIGHT AND MAKE OF VEHICLE, AUSTRALIA, JANUARY 1998

<i>Make</i>	<i>Tare weight (kg)</i>					<i>Total</i>
	<i>1500 and under</i>	<i>1501 to 5000</i>	<i>5001 to 10000</i>	<i>Over 10000</i>	<i>Not stated</i>	
Asia	—	3	—	—	—	3
Hino	—	—	12	4	—	16
International	—	1	—	2	1	4
Leyland	—	—	1	—	—	1
Man	—	1	4	8	—	13
Mercedes-Benz	—	5	20	2	10	37
Mitsubishi	—	1	—	—	—	1
Nissan	—	13	—	—	2	15
Scania	—	—	1	17	—	18
Toyota	2	157	—	—	12	171
Volvo	—	—	8	—	—	7
Unknown	—	—	—	—	—	8
Total	2	181	46	40	25	294

TABLE 20. REGISTRATIONS OF NEW MOTOR CYCLES BY MAKE OF VEHICLE, JANUARY 1998

Make	State/Territory									Capital cities
	NSW	Vic.	Qld	SA	WA	Tas.	NT	ACT	Australia	
A.T.K	1	—	—	—	—	—	—	—	1	—
B.M.W.	25	22	4	9	4	1	3	—	68	45
Cagiva	1	—	—	1	—	—	—	—	2	2
Ducati	30	23	10	2	9	2	3	4	83	53
Harley-Davidson	77	48	40	14	35	4	4	9	231	127
Honda	226	166	136	36	61	10	1	7	643	423
Husaberg	1	—	1	1	1	—	—	—	4	1
Husqvarna	15	8	4	3	1	—	—	—	31	19
Kawasaki	80	79	55	18	38	5	4	9	288	167
K.T.M.	20	27	18	3	9	2	1	—	80	30
Laverda	—	1	—	—	1	—	—	—	2	2
Moto Guzzi	1	3	1	1	2	1	—	—	9	5
Suzuki	99	107	29	12	28	7	2	4	288	167
Triumph	20	22	10	3	2	1	1	—	59	33
Vespa	6	2	—	2	1	—	—	1	12	11
Yamaha	108	93	90	27	39	6	3	5	371	190
Unknown	3	1	2	—	1	1	1	—	9	7
Total	713	602	400	132	232	40	23	39	2,181	1,282

TABLE 21. REGISTRATIONS OF NEW MOTOR VEHICLES BY FUEL TYPE AND TYPE OF VEHICLE, AUSTRALIA, JANUARY 1998

Type of Vehicle	Fuel type				Total
	Petrol	Diesel	Gas	Other (incl. dual fuel)	
Passenger vehicles	43,163	880	28	93	44,164
Light commercial vehicles	3,933	2,086	7	41	6,068
Trucks —					
Rigid	2	561	—	—	563
Articulated	—	197	—	—	197
Non-freight carrying	10	32	—	—	42
Buses	53	240	—	1	294
Total (excl. motor cycles)	47,161	3,996	35	135	51,328
Motor Cycles	2,181	—	—	—	2,181

For more information . . .

The ABS publishes a wide range of statistics and other information on Australia's economic and social conditions. Details of what is available in various publications and other products can be found in the ABS Catalogue of Publications and Products available from all ABS Offices.

ABS Products and Services

Many standard products are available from ABS bookshops located in each State and Territory. In addition to these products, information tailored to the needs of clients can be obtained on a wide range of media by contacting your nearest ABS Office. The ABS also provides a Subscription Service for standard products and some tailored information services.

National Dial-a-Statistic Line

0055 86 400

Steadycom P/L: premium rate 25c/20 secs.

This number gives 24-hour access, 365 days a year, for a range of important economic statistics including the CPI.

Internet

<http://www.abs.gov.au>

A wide range of ABS information is available via the Internet, with basic statistics available for each State, Territory and Australia. We also have Key National Indicators, ABS product release details and other information of general interest.

Sales and Inquiries

client.services@abs.gov.au

National Mail Order Service	(02) 6252 5249
Subscription Service	1300 366 323

	Information Inquiries	Bookshop Sales
CANBERRA	(02) 6252 6627	(02) 6207 0326
SYDNEY	(02) 9268 4611	(02) 9268 4620
MELBOURNE	(03) 9615 7755	(03) 9615 7755
BRISBANE	(07) 3222 6351	(07) 3222 6350
PERTH	(08) 9360 5140	(08) 9360 5307
ADELAIDE	(08) 8237 7100	(08) 8237 7582
HOBART	(03) 6222 5800	(03) 6222 5800
DARWIN	(08) 8943 2111	(08) 8943 2111



Client Services, ABS, PO Box 10, Belconnen ACT 2616

